

Iconographie des Crustacés et des
Arachnides de l'Égypte Paris 1818

par J. C. de Savigny

Crustacés

- Pl. 1. fig. 1. *Cypride ippecus*.
2. " *rhomboides*.
3. *Micropyris sulcatus*.
- Pl. 2. fig. 1. *Macrophthalmus leachii*.
2. " *Boschi*.
3. *grapous fainardi*.
4. " *varius*.
5. *Thalypusa fluviatilis*.
6. " *Berardi*.
- Pl. 3. *Potamurus pelagicus*.
- Pl. 4. fig. 1. " *Chaptalii*.
2. " *Konstantii*.
3. " *Poissonii*.
4. " *admete*.
5. *Cancer pygmaea*.
6. *Carcinus malnas*.
7. *Eryphia spinifrons*.
- Pl. 5. fig. 1. " " *juv.*
2. *Drapexia cymodoce*.
3. *Silumnus Vaquelinii*.
4. " *herfellus*.
5. " *Andreosfyi*.
6. 7. *Cancer inaequalis*.
8. " *virulosus*.
- Pl. 6. fig. 1. " *hydrophilus*.
2. " *granulatus*.
3. " *exsculptus*.
4. *Maya squinado*.
5. " *Rosfelli*.
6. *Stenorynchus phalangium*.
- Pl. 7. fig. 1. *Dinnothores veterum*.
2. *Porcellanid Boschi*.
- Pl. 8. *Scyllarus latus*.
- Pl. 9. fig. 1. *Pagurus incisus*.
2. " *Labillardieri*.
3. *felix stellata*.
4. *Athanas nitescens*.
- Pl. 10. fig. 1. " *Edwardsi*.
2. *Salaemon squilla*.
3. " *Setitthouarsii*.
4. " *Beaupèri*.
- Pl. 11. fig. 1. *Gammarus Dulongii*.
2. *Ayesta furina Sav.*.
3. *Gammarus Fresnelii*.
4. *Gammarus filosa Sav.*.
5. *Cancer rubicatus*.
6. *Amphithoe Ramondi*.
7. *Orchestia Montegui*.
8. " *Deshayesi*.
9. " *Choquetii*.
10. *Anilocra Cuvieri*.
11. " *Mediterranea*.
- Pl. 12. fig. 1. *Sphaeroma cinerea*.
2. " *juv.*.
3. " *Walckenaeri*.
4. " *Dumerillii*.
5. " *spinosa*.
6. *Isopoda Basteri*.
7. *Ligia Holici*.

- Pl. 13. fig 1. *Tylos Latreillii*
 2. *trivius Olivieri*
 3. " *Clairvillii*
 4. " *Reaumurii*
 5. *Sorrellii Leguri*
 6. " *Swaenmerdamii*
 7. " *Santyerii*
 8. }
 9. } *Arnadilla*

Arachnides.

- Pl. 1. fig 1. *Nemesia cellicola*.
 2. *Segestria perfida*.
 3. *Ariadna imidiatrix*.
 4. *Lachesis perversa*.
 5. *Tegonaria domestica*.
 6. *Arachne familiaris*.
 7. " *timida*.
 8. *Hersilla caudata*.
 9. *Erigone vagans*.
 Pl. 2. fig 1. *Allobarus flavus*.
 2. *Eugnatha nitens*.
 3. " *pelusia*.
 4. " *filiformis*.
 5. *Argyope aurelia*.
 6. " *sericea*.
 7. " *splendida*.
 8. *Epeira armida*.
 9. " *virve*.
 10. " *apollina*.
 Pl. 3. fig 1. 2. " "
 3. " *umbrosica*.
 4. " *lucida*.
 5. " *chloris*.
 6. " *Durandi*.
 7. *Caryo nitida*.
 8. " *longipes*.
 9. *Latreutes crebus*.
 10. " *argus*.
 11. " *venator*.

- Pl. 3. fig 12. *Tholus rivulatus*
 13. " *phalangioides*
 Pl. 4. fig 1 *Sphaus alexandrinus*
 2 *Lycosa Tarantulina*
 3 - *arenaria*
 4 - *peregrina*
 5 - *pellucida*.
 6 - *agretza*.
 7 - *filosica*
 8 - *pelusica*
 9 *Dolomedes hippomeus*
 10 *Ocyale atalanta*
 " *Eresus Petaguae*
 12 - *Dufourii*
 Pl. 5 fig 1. *Scyloves thoracica*
 " 2 " *rufescens*
 " 3 *Dysdera erythrina*
 4 *Drassus Listeri*
 5 - *Schäfferi*
 6 - *Lyoni*.
 7 - *Linnaei*
 8 *Clubionas Albini*
 9 - *Listeri*
 10 *Phidionus Clerckii*
 Pl. 6 fig 1. " *Waldenarii*
 2 " *Linnaei*
 3 " *Fabricii*
 4 " *Albini*
 5 " *rhombiferus*
 6 *Selenops Aegyptiaca*
 7 *Thomisus Peronii*
 8 - " *var.*
 9 - *Martyni*
 10 - *Puffoni*
 11 - *hirtus*
 12 - *Lalandii*
 13 - *Clerckii*
 Pl. 7 fig 1. *Thomisus Graud*
 2 " " *var.*
 3 " *potundatus*
 4 " " *var.*

- Pl. 7. fig 5. *Thomisus rotundatus* var.
 6 *Platyscetus Savignyi*
 7 — — var.
 8 *Attus Adansonii*
 9 " *Northesii*
 10 " *Deurya*
 11 " *Frischii*
 12 " *Seeneri*
 13 " ² *Posmetii*
 14 " ¹ *tardigradus*
 15 " *cupreus*
 16 " *Mouffetii*
 17 " *Földeni*
 18 " — var.
 19 " *Blunteri*
 20 " *Illigerii*
 21 " *Redii*
 22 " *Paykullii*

- Pl. 8 fig 1 *Scorpio occitanus*
 2 " *Amorensis*
 3 " *australis*
 4 *Chelifer sesamoides*
 5 " *Hermannii*
 6 " *Beauvoisii*
 7 *Solpuga arcuoides*
 8 " *intrepida*
 9 " *melanus*
 10 " *phalaenium*

- Pl. 9 fig 1. *Phalangium Aegyptiacum*
 2 " *Coptilium*
 3 " *Savignyi*
 4 *Acarus*
 5 *Argas*
 6 " *Fischeri*
 7 " *Hermannii*
 8 " *persicus*
 9 *Ixodes Leachii*
 10 " *Aegypticus*
 11 " *Fabricii*
 12 " *Linnaei*
 13 " *Forskaelii*.

21

22

23

24



Desiné et gravé en 1805-1812.

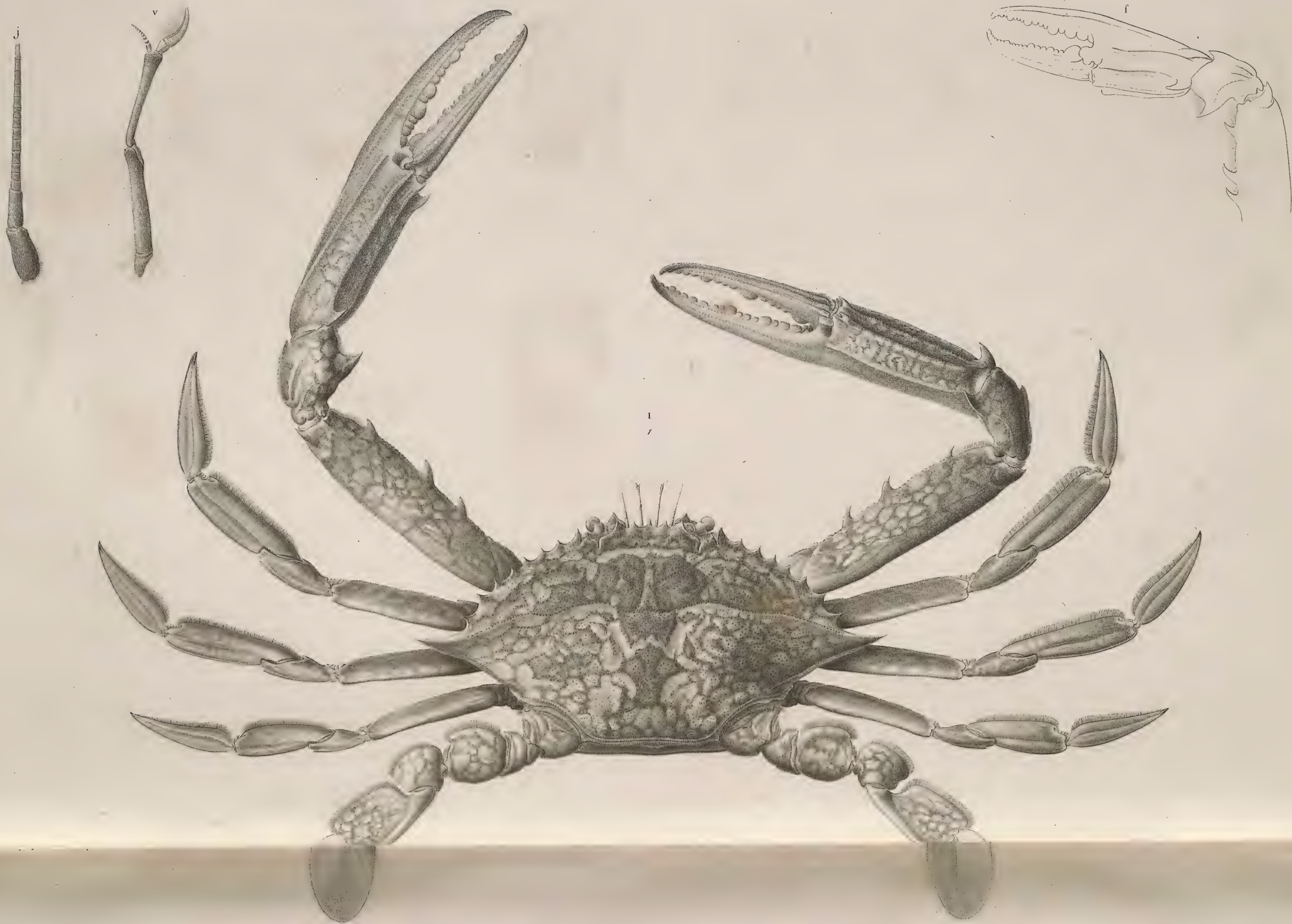
CRABES - CAVALIERS.

Tavernier sc.

DSI



CRABES & ALÉSIDES. POTAMONS ou CRABES-FLUVIATILES.



Dessiné et gravé en 1805-1812.

Renard sc.

CRABES - NAGEURS.













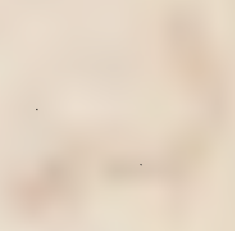




Designé et gravé en 1805-1815.

CRABES.

Reuter et Boquet sculp.



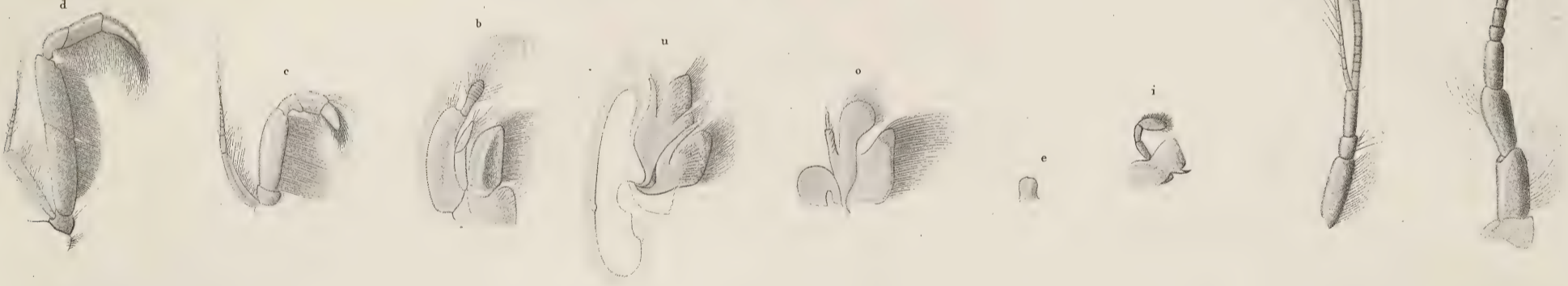
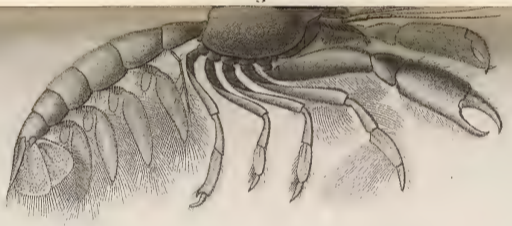




Dessiné et gravé en 1805-1812.

Tresca sc^l

HOMARDS.











ASELLES ~ CLOPORTES.

Designé et gravé en 1805-1812.

Revue de Victor S.

Vertical text columns, likely bleed-through from the reverse side of the page. The characters are faint and difficult to decipher.

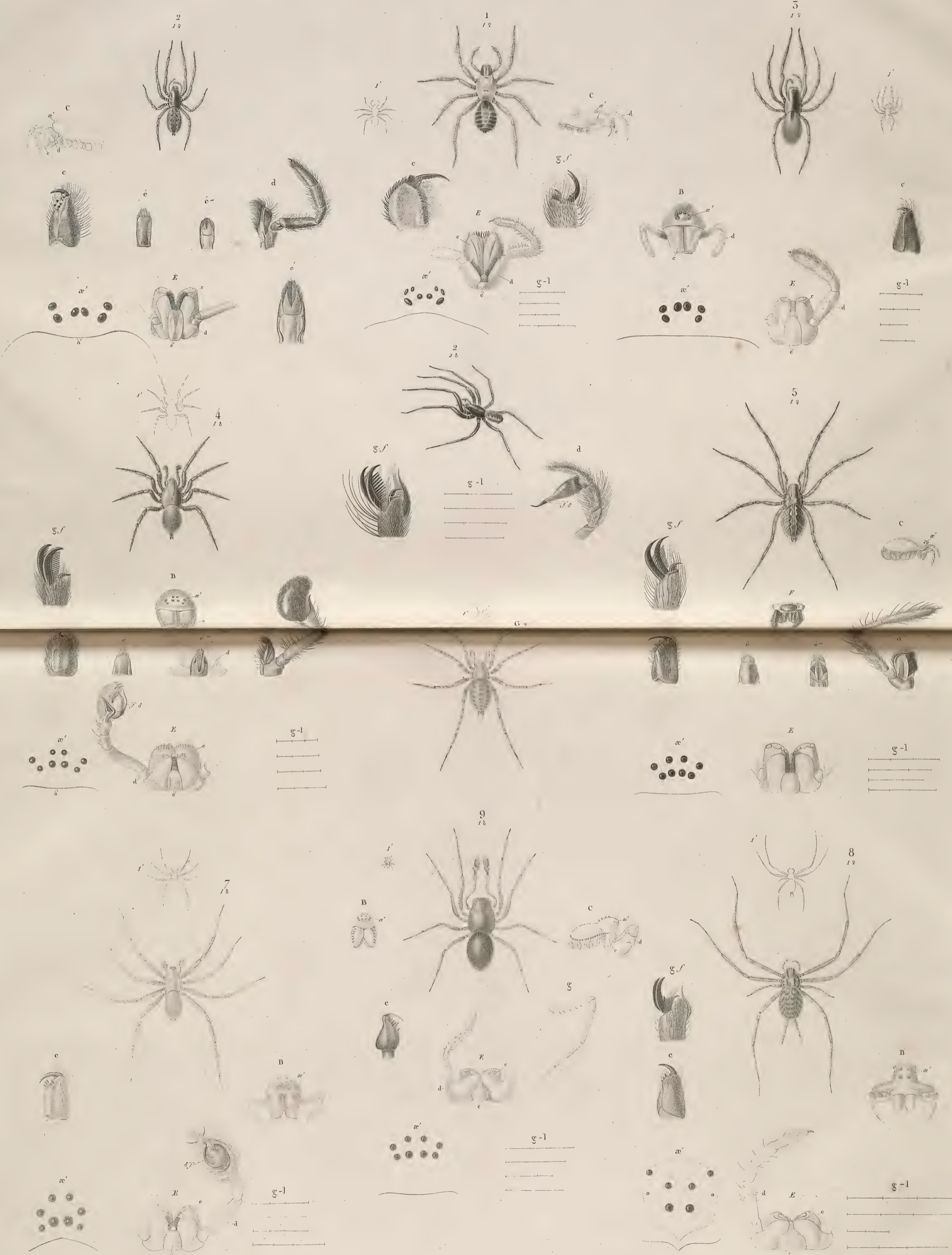


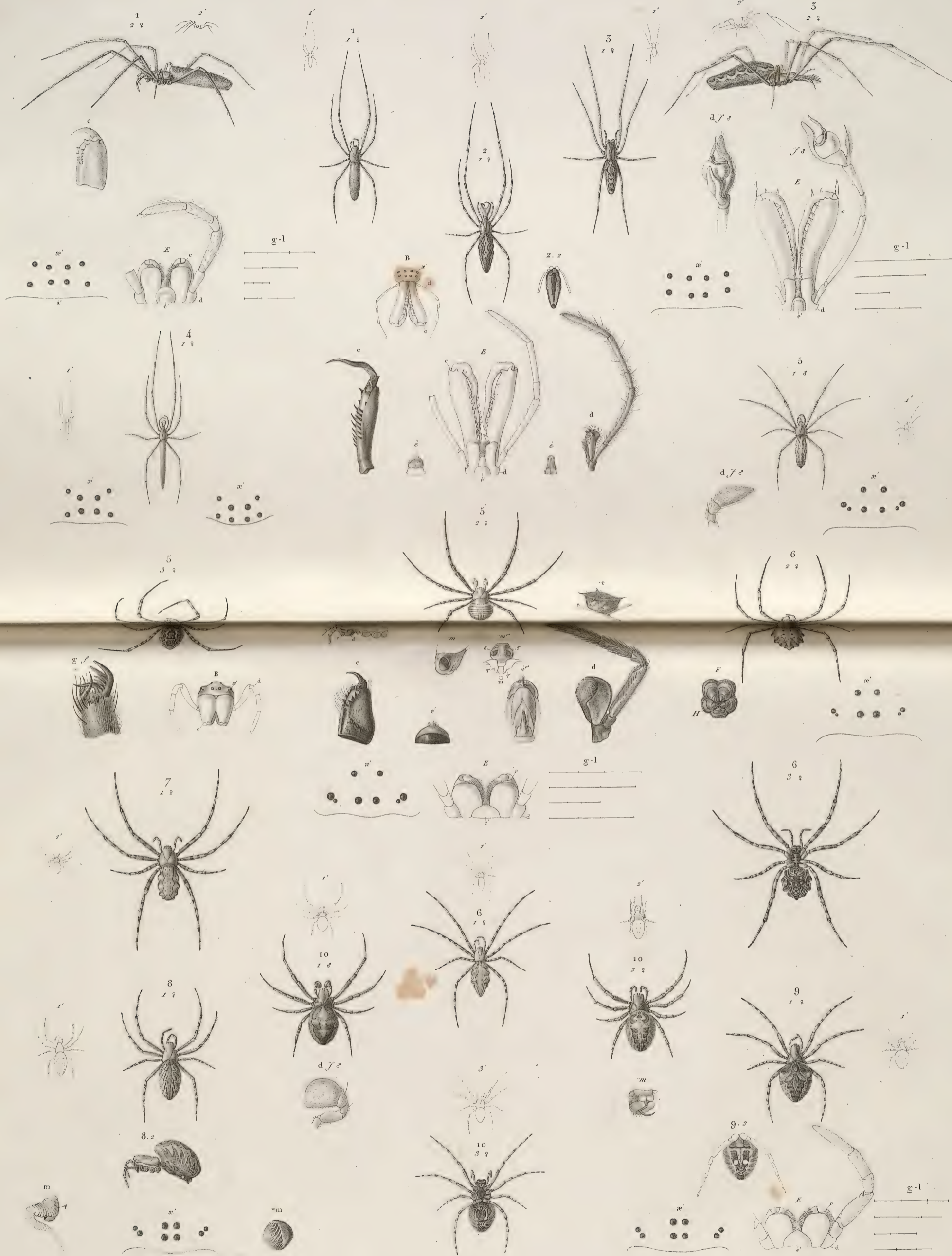


Desiné et gravé en 1805-1812.

CLOPPORTES.

M^{re} Benoist et Poiget sc^{rs}.

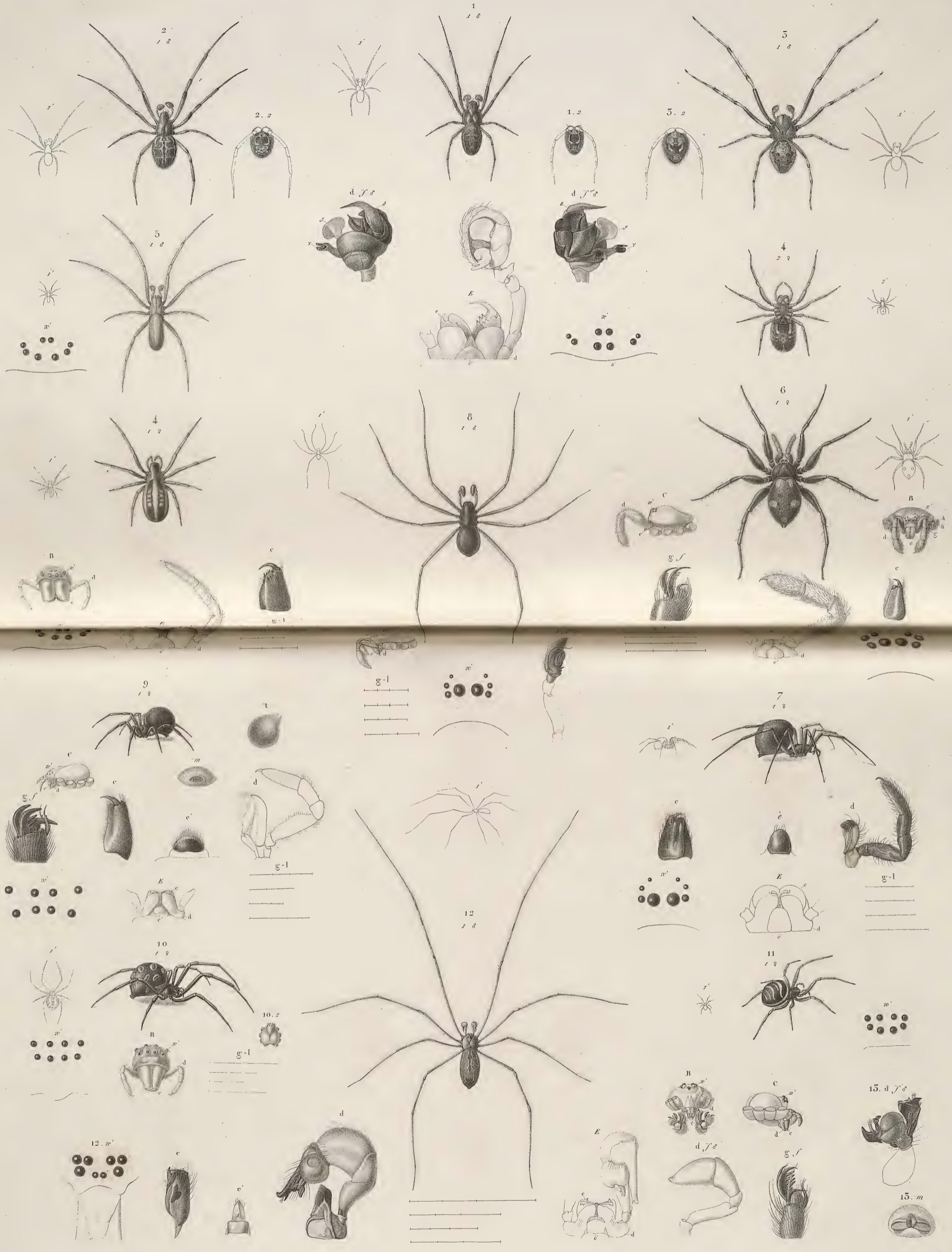




Designé et gravé en 1805-1817.

ULOBORES. EUGNATHES. EPÉIRES.

Choquet et M. Léprieux sc.

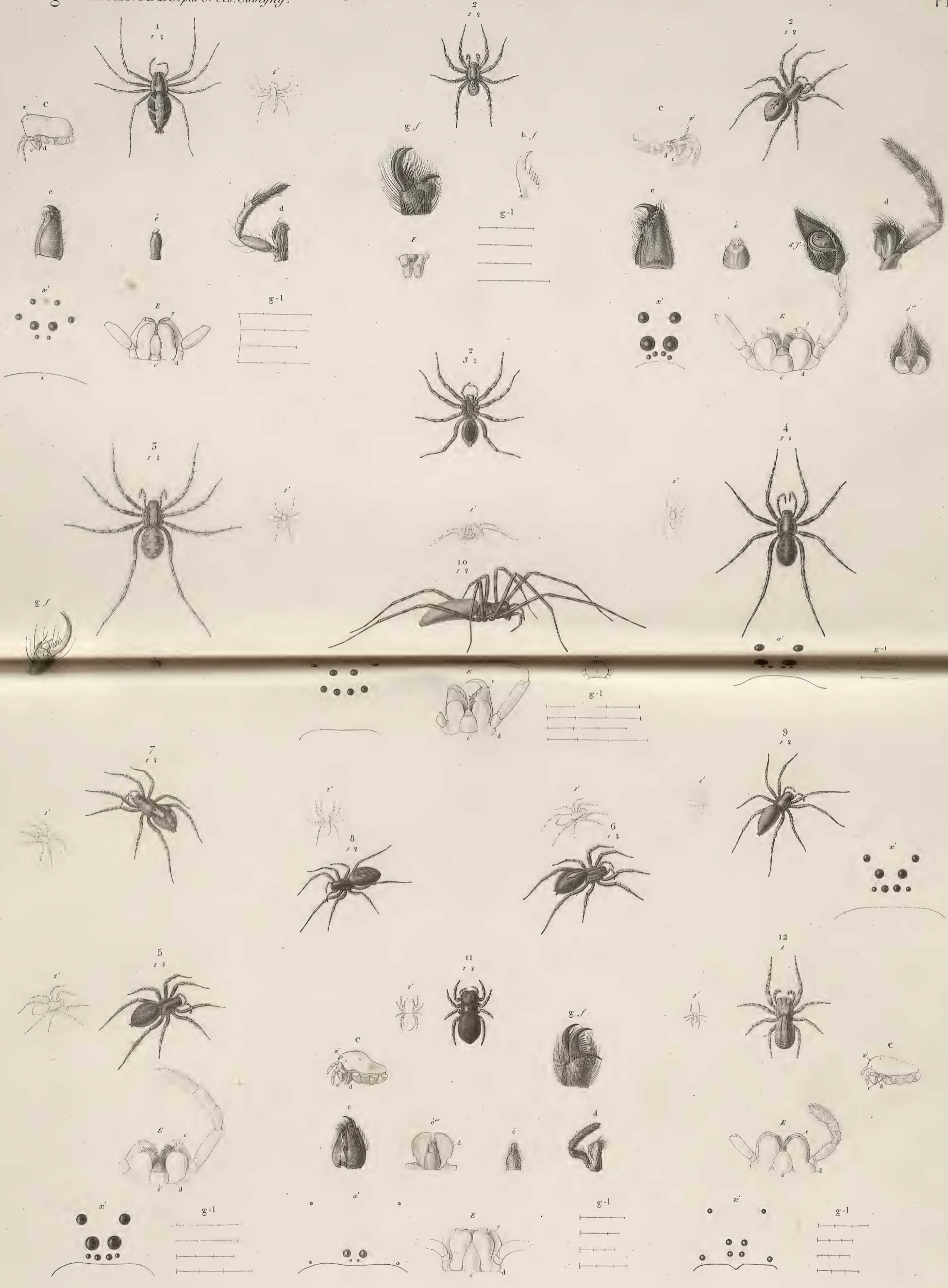


Terminé par Talbanc et M. Collais.

Desiné et gravé en 1805-1812.

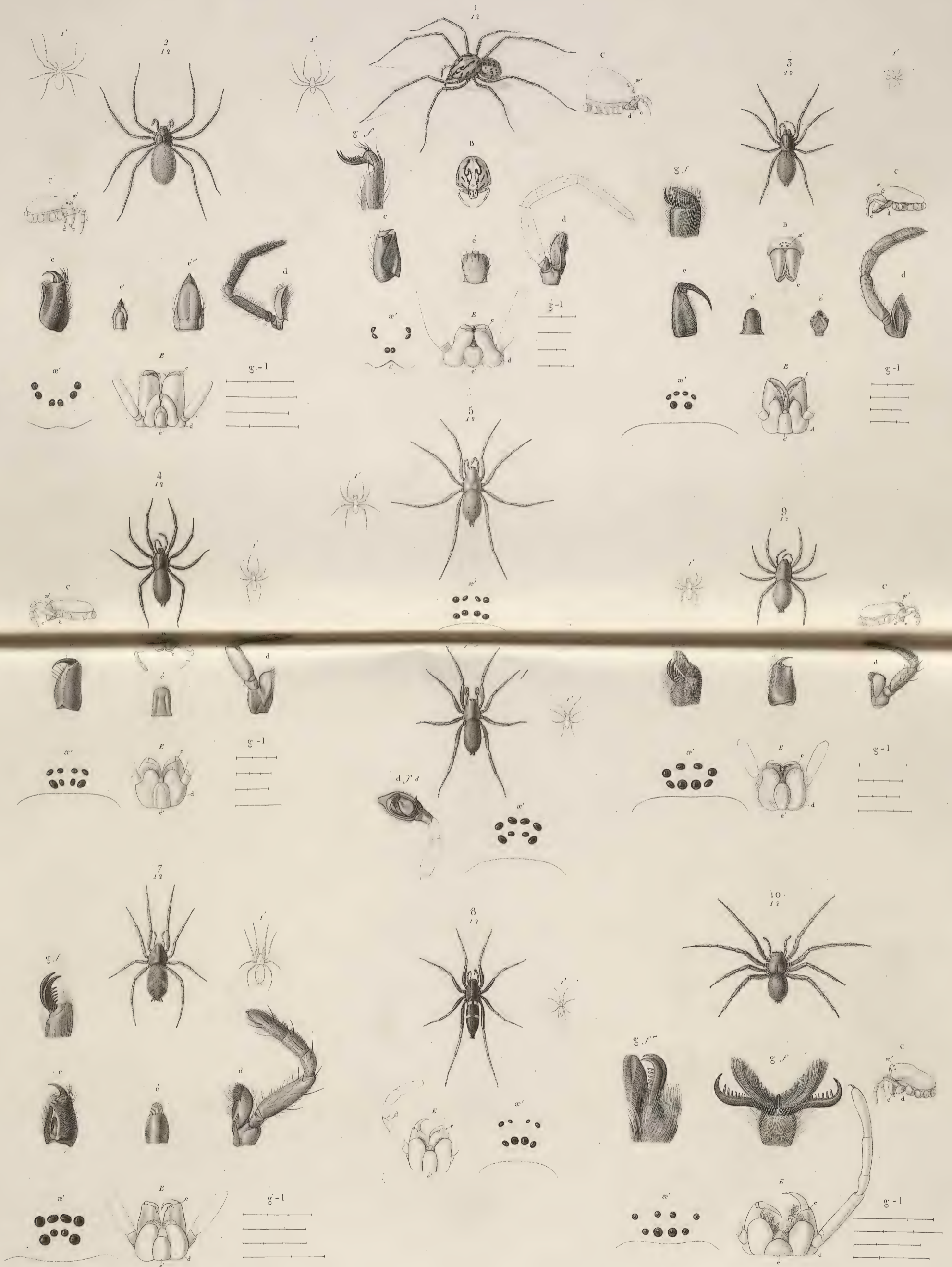
EPÉIRES. CLOTHOS. LATRODECTES. PHOLQUES.

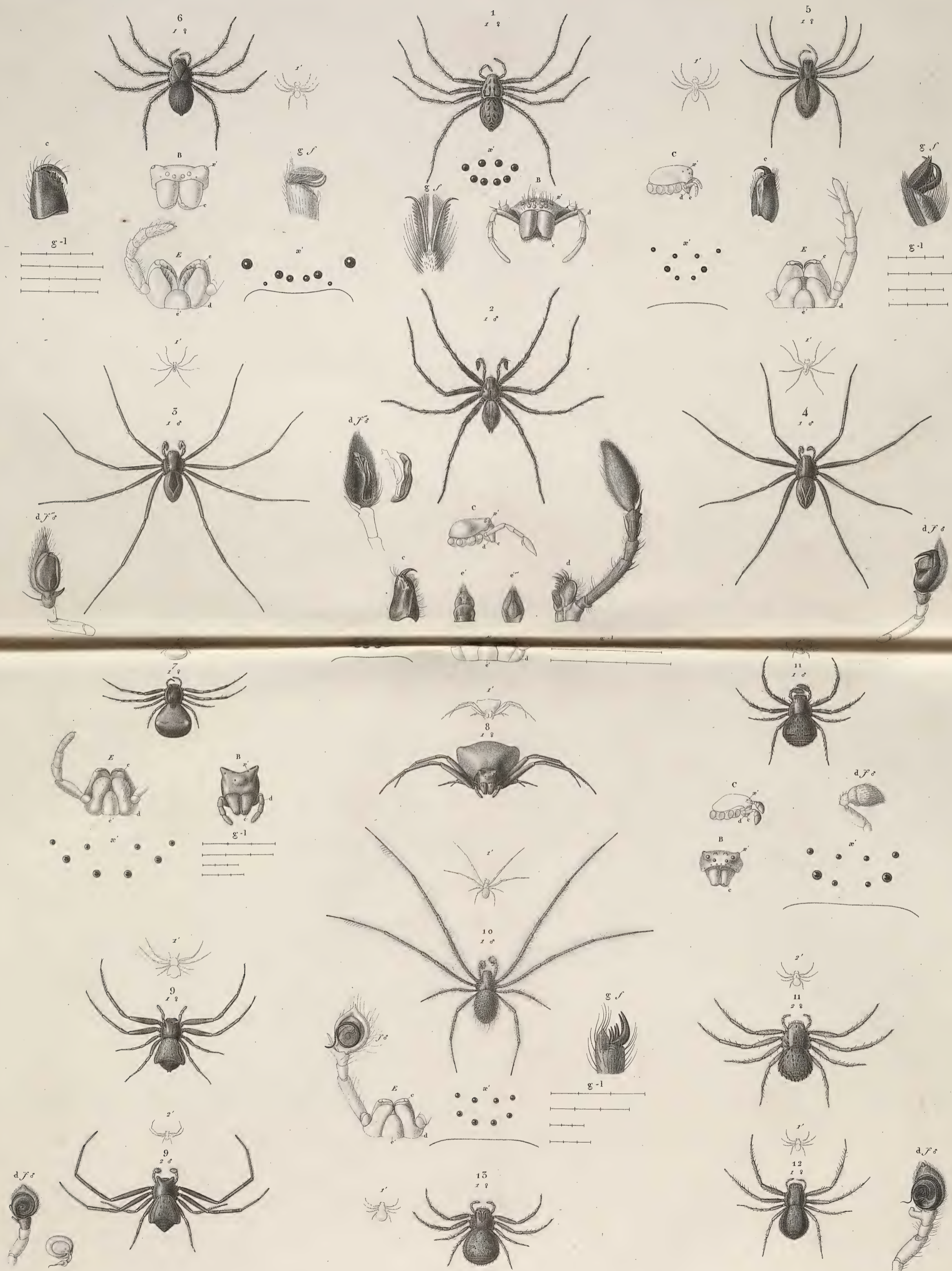
Goulet et Simonet sc.



Desiné et gravé en 1805-1812.

M. J. J. J. J. J.





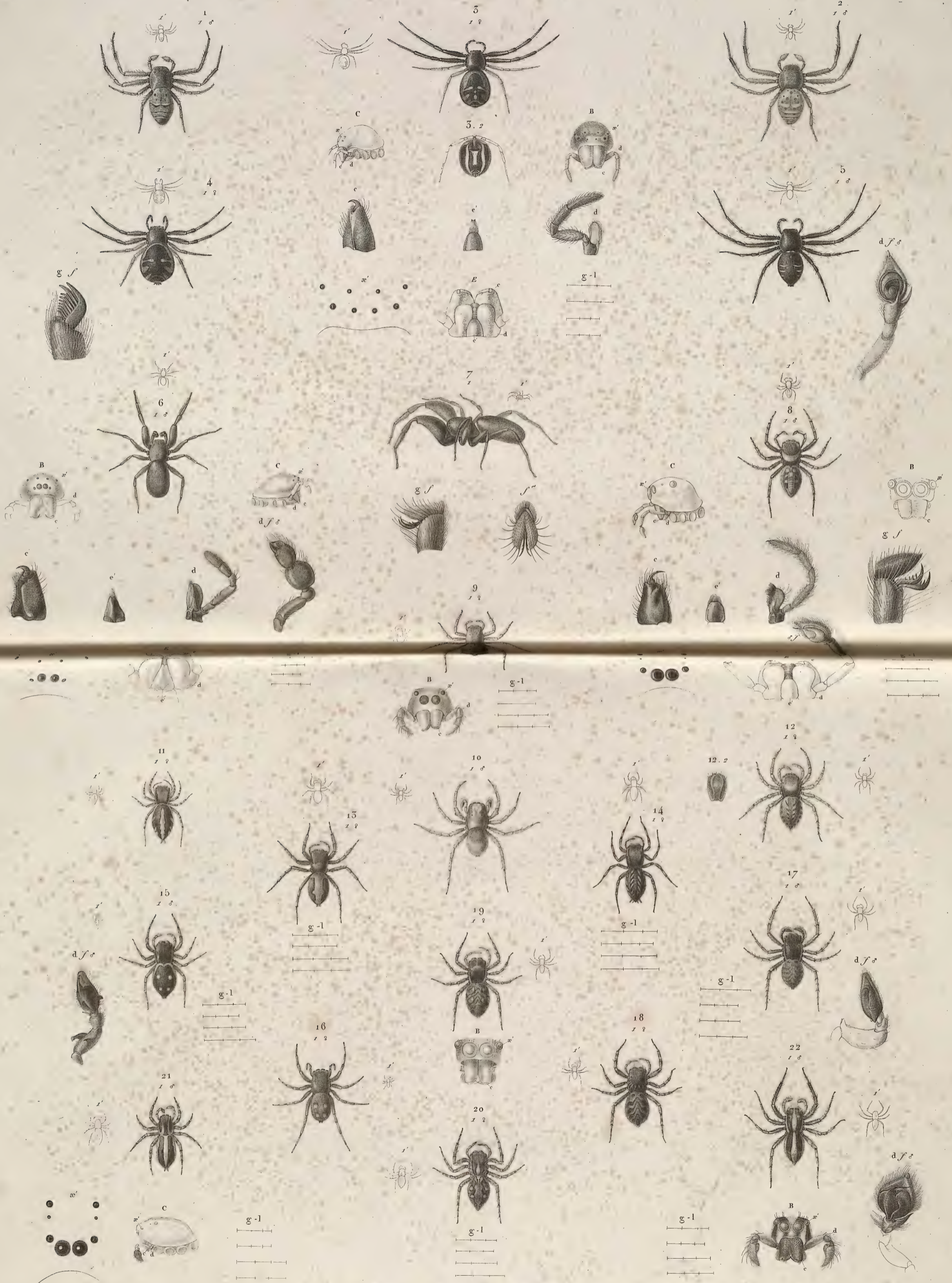
Desiné et gravé en 1803-1812.

THOMISES.

Fymar et Mancosu sc.











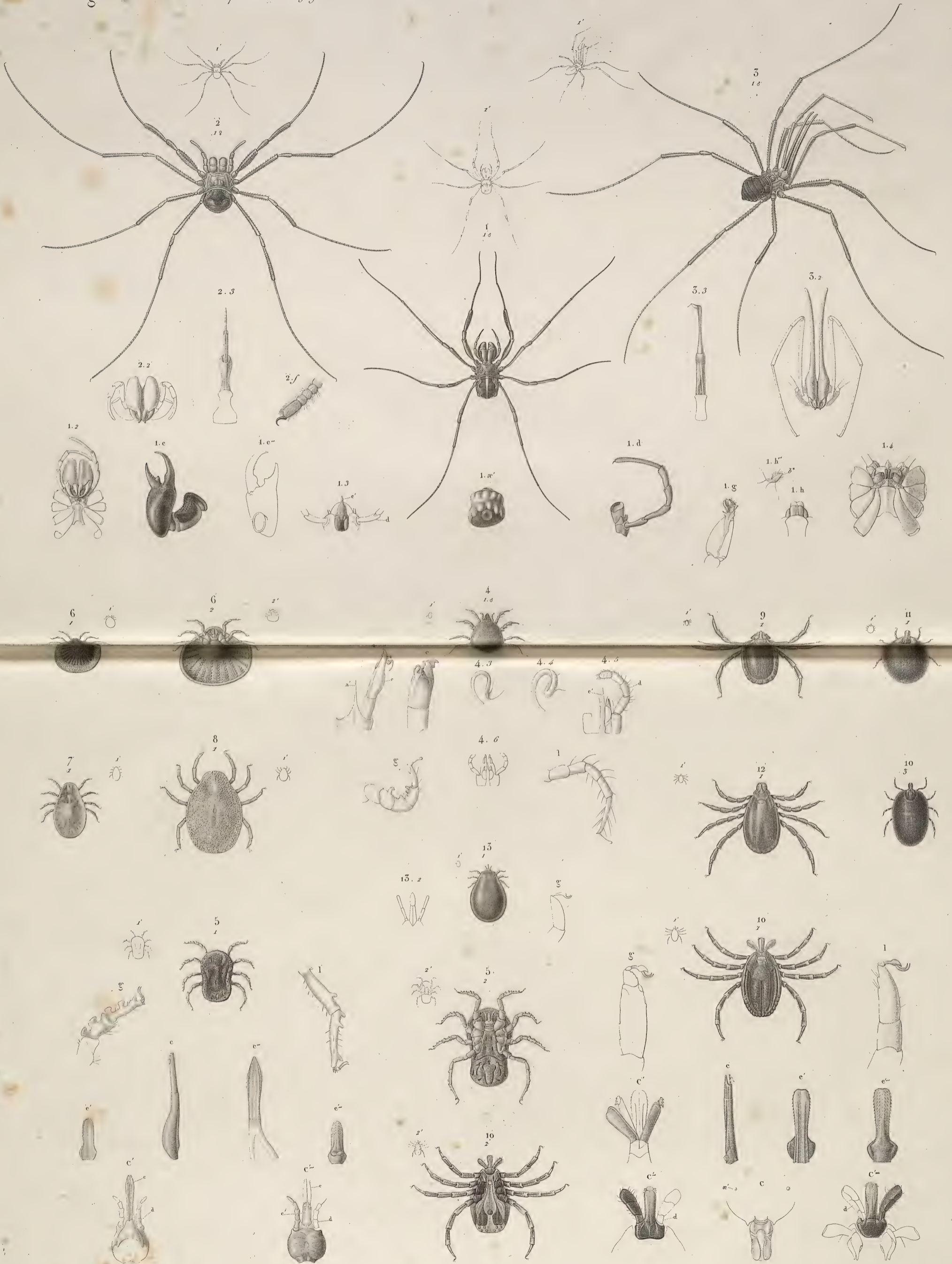
Desaiet et Gravé en 1806 - 11.

SCORPIONS. PINCES. SOLPUGES.

Forcell. Sc's.

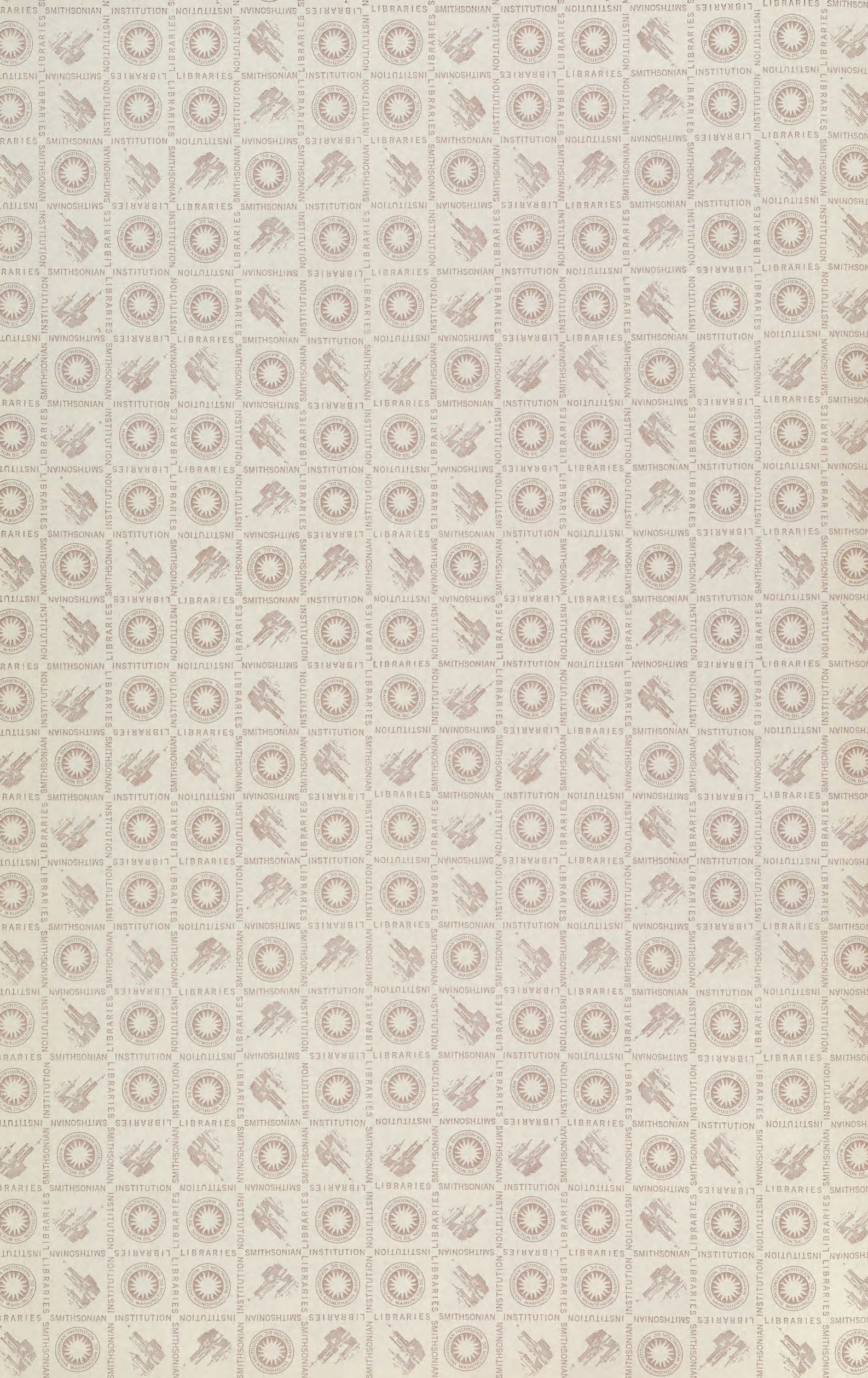


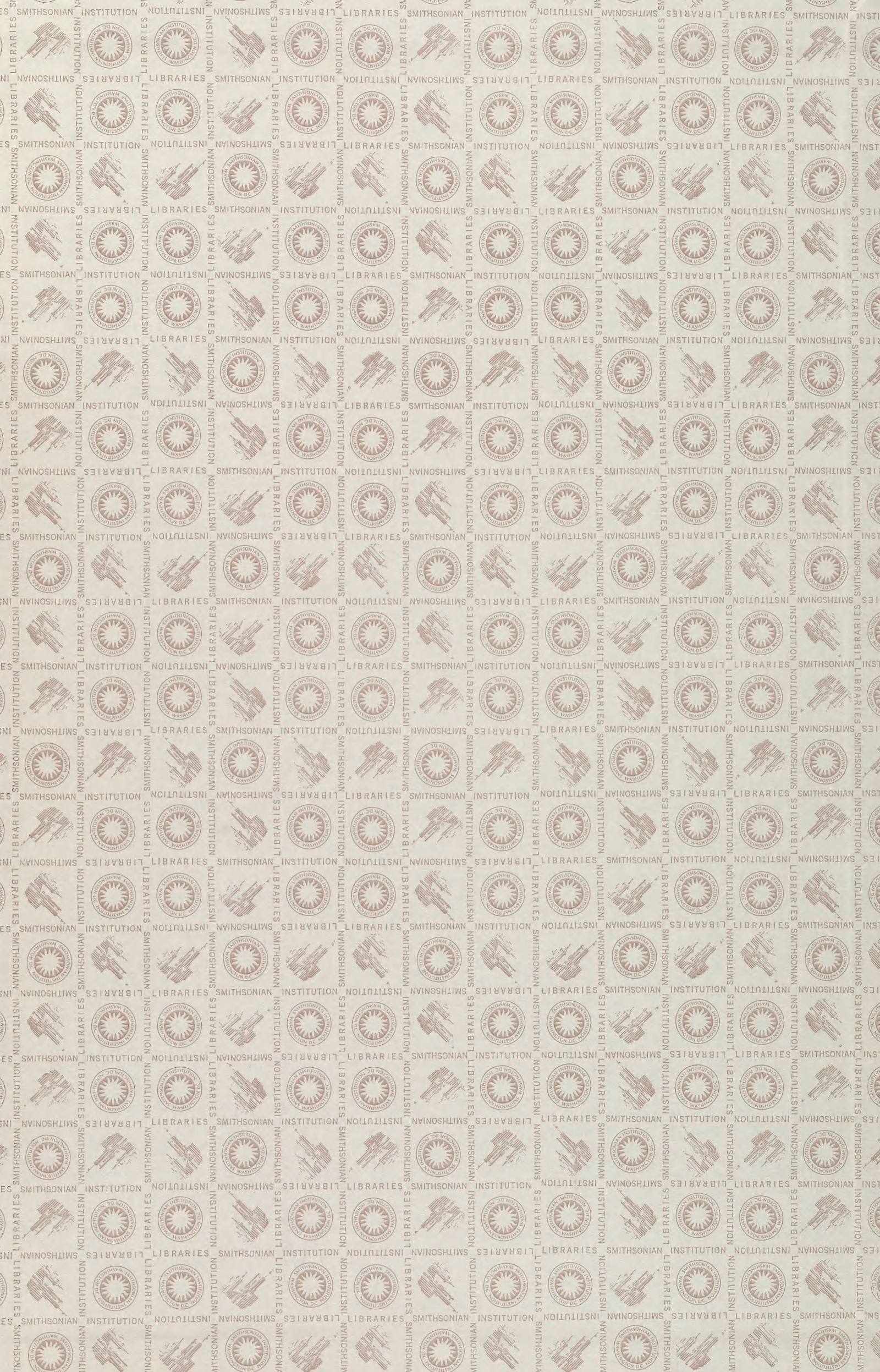




RU 5 75. 399.

Alc





SMITHSONIAN INSTITUTION LIBRARIES
3 9085 00316872 1
Q1436 S26
Iconographie des Crustacés et des Arach.